

Gastro-Intestinal / Colon Rectal Suite

Hughes Professional Building

Grand Rapids, Michigan

data

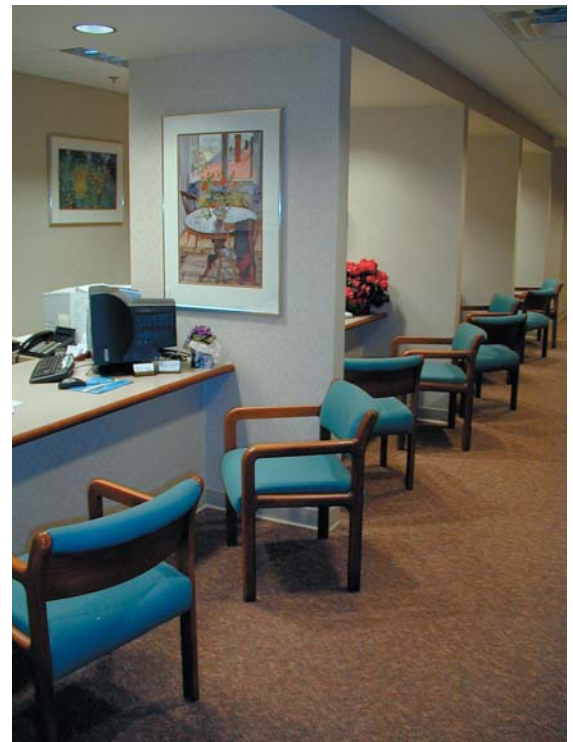
- interior build-out for outpatient surgical suite
- completed: January 2001
- building area: 12,375 s.f.
- general contractor: Pioneer Construction, Inc.
- delivery method: construction manager
- cost: \$800,000 / \$65 per s.f.



nurses' station



reception desk



registration area

summary

The need for a new space grew out of the merger of two separate surgical practices within MMPC (a multi-disciplinary medical corporation). The merger provided each group with the opportunity to evaluate their practices and look for shared efficiencies. The design concerns focused on successfully directing different patient flows, minimizing travel distances for staff, and centralizing common / shared functions. The suite comprises surgical colon rectal exam rooms, a shared surgical procedure pod with recovery area, and a clinical GI pod. Support spaces include scope cleaning room, lab, records, waiting, check-out and administrative space.

Gastro-Intestinal / Colon Rectal Suite

Hughes Professional Building

Grand Rapids, Michigan



treatment room



view of recovery area from nurses' station



recovery area



another view of nurses' station